



CARBOLITH PL **TRENCHLESS PIPE AND** SEWER REPAIR SYSTEM.

Minova CarboTech GmbH | www.minovaglobal.com/emea-cis



SEWER AND PIPE REPAIR.

CarboLith PL is a three-component system which is combined with a glass fibre liner to be for trenchless, in-situ repair of short lengths of sewer pipes and pipework.

Component A of Carbolith PL is a water-glass component with additives. Component B is a modified polyisocyanate. Component C is a blend of additives improving the components and regulating the pot life of the mixture.

The combination of components and liner forms an interpenetrating network of tough elastic, non-foamed silicate resin.



Adjustable reaction time due to 3rd component



Highly economical



Quality adhesion



Penetrates deeply



Excellent curing performance



High chemical resistance

WHY CARBOLITH PL?

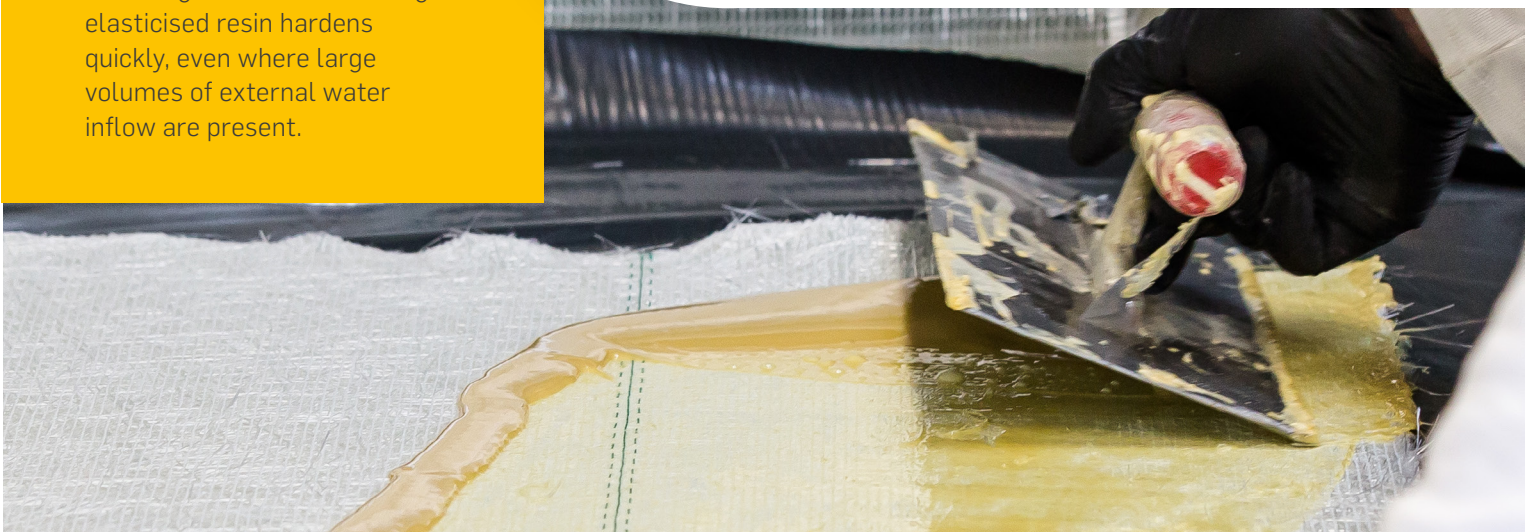
CarboLith PL is used to repair sewer and pipework. The product has excellent properties and economical advantages. The non-foaming elasticised resin hardens quickly, even where large volumes of external water inflow are present.



Approved by



DIBt - Z-42.3-383.



FOUR SIMPLE INSTALLATION STEPS.



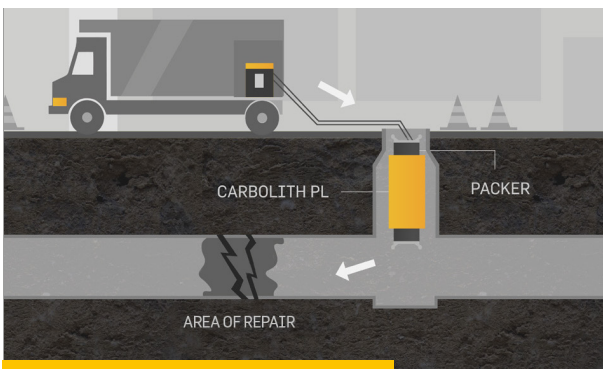
STEP 1: MIX AND IMPREGNATE

Approx. 2% to 4% of the C-component is added to the A-component, depending on temperature, and mixed thoroughly. The next step is to further mix with a double volume of B-component for a minimum of 2 minutes. A prepared fibreglass mat is then saturated with the mixture using a spatula to both sides of the mat. Finally, a metal roller is used to ensure complete saturation of the mat.



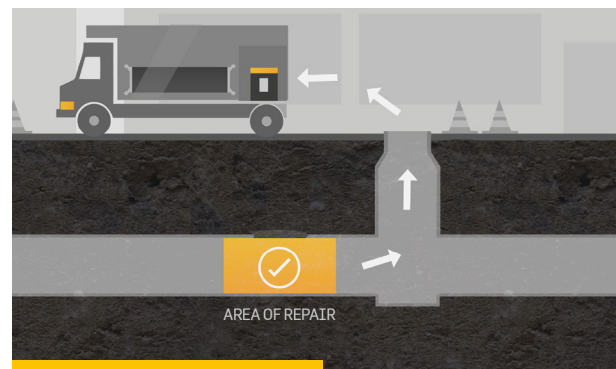
STEP 2: SET THE SHORTLINER

The fibreglass mat saturated with CarboLith PL is wrapped around an inflatable "packer". Ensure that adjacent mats overlap.



STEP 3: APPLICATION

This packer is transported to the area of treatment and positioned in place using slide rods, pneumatic rods or a winch. Inflation of the packer presses the saturated fibreglass mat onto the pipe or sewer wall. The resin bonds the laminated fibreglass mat to almost all commercial pipe materials and thus permanently seals and repairs cracks, fissures, and otherwise damaged areas.



STEP 4: CURING

The packer is deflated after approx. 1 hour and removed from the pipe. Flow can be routed through the packer during installation and through the liner immediately after packer removal. Complete curing is reached after 7 days (for further information please refer to the CarboLith PL technical data sheet).

SECURING PERFORMANCE. TOGETHER.

MINOVA CARBOTECH GMBH

Bamlerstr. 5d

45141

Essen

Germany

Tel +49 (0) 2001 809 83 653

globalmarketing@minovaglobal.com

www.minovaglobal.com/emea-cis

